

MOUNTING INSTRUCTIONS

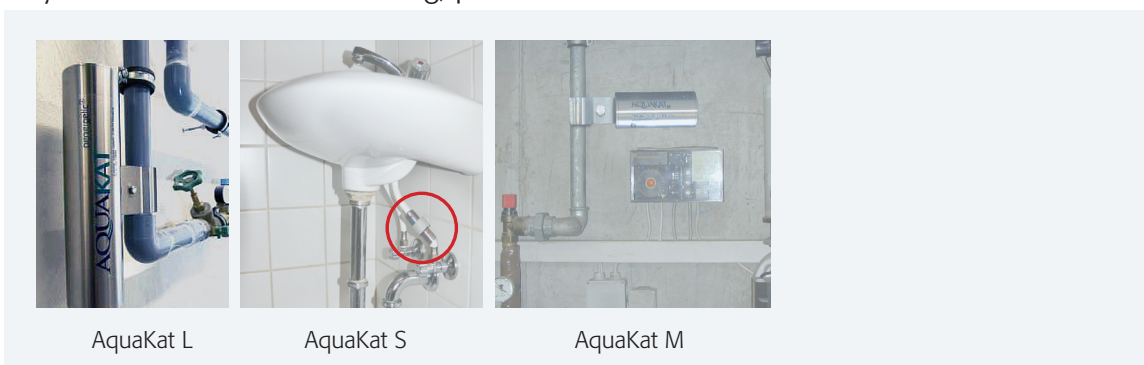
General

In the house after the water meter and the pressure reducer and on pipes of heating circuits.

In the apartment under the sink, on the shower hose or the cold water pipe.

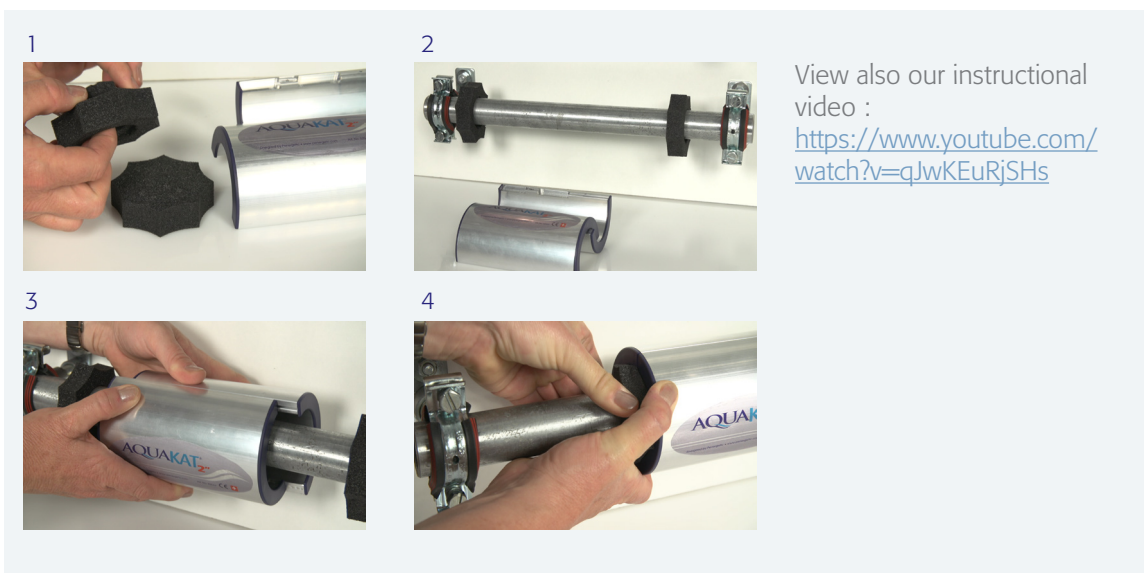
Mounting length: 5 to 10cm free pipe space.

If you have difficulties mounting, please contact us.



Mounting the AquaKat 2"

First slide the two half-shells together over the pipe. Then insert the supplied spacers into the AquaKat.



Mounting the AquaKat

At the top and in the middle the AquaKat has screw threads. Depending on how the AquaKat is to be mounted, the clamping fixture can be placed at the top (vertical mounting) or on the side (horizontal mounting).

Fit the clamping fixture on one of the threads with the screw nut (wrench). Tighten well. The clamping is then slid over the water pipe and secured with bolt and nut.